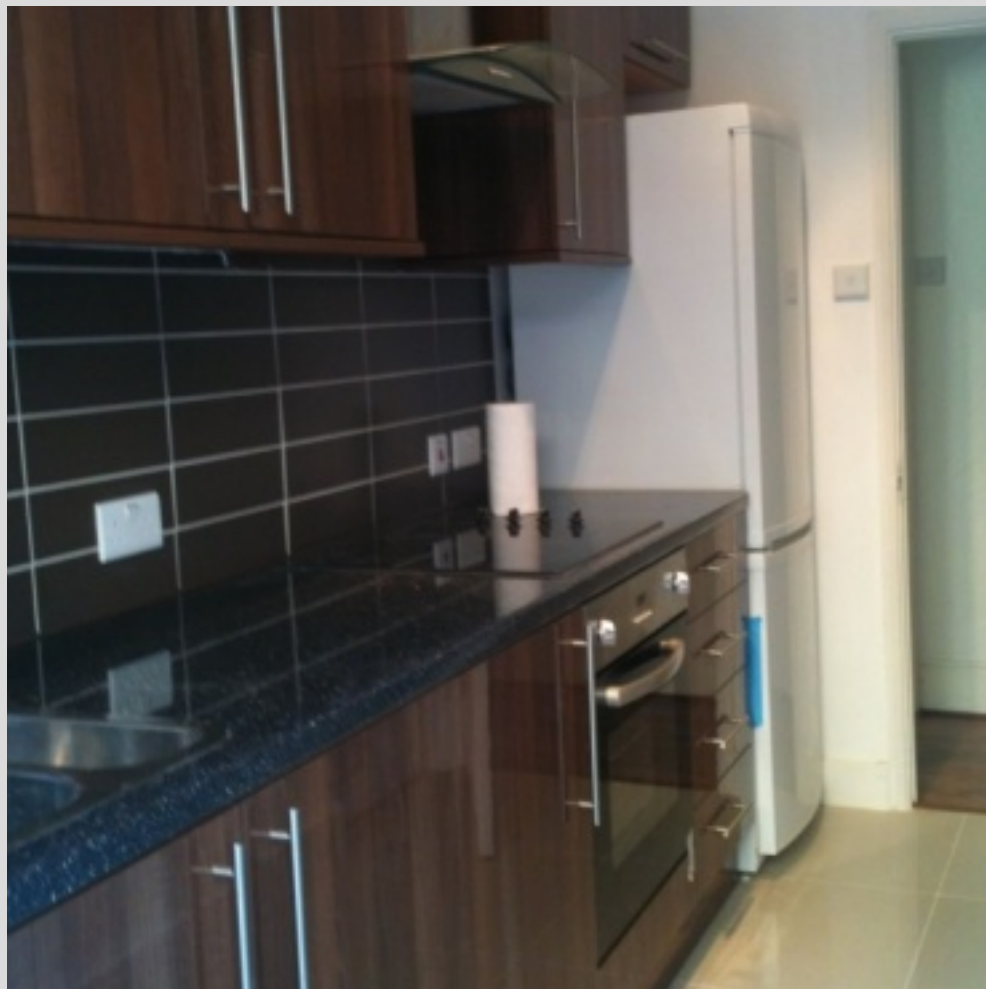


EARLHAM GROVE, LONDON, E7

£975.00 PER MONTH

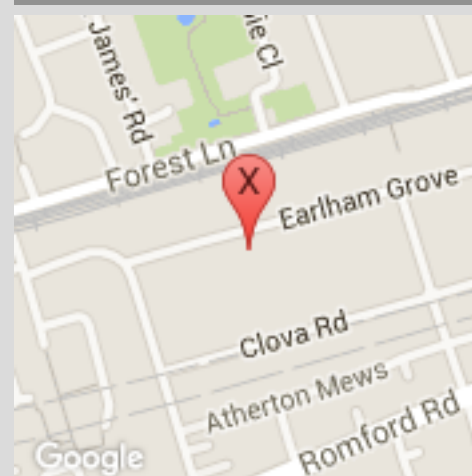
PROPERTY MAIN IMAGE



DETAILS IN BRIEF

Available Date:	21/04/2013
Bedrooms:	1
Deposit:	£1150
Bathrooms:	1
Length of Tenancy:	N/A
Furnishing:	Furnished
Type of Building:	N/A

MAP



VIEWING DETAILS

Name:	Nic London
Email:	info@nlondon.co.uk
Telephone:	07770917513

FULL DESCRIPTION

1 Bed Flat Stratford, Forest Gate E7 fully furnished.

Period building conversion, being renovated to receive new tenants.

10min walk to Westfield's, Stratford town centre and Stratford Underground station, and manor park, 7 miles to Charing cross. Forest gate and Maryland over ground stations within 5min walk,

Atherton Leisure centre with 5min walk. And close access to M25 motorway .

Large and spacious Luxury ground floor 1 bed apartment with gardens, separate kitchen and lounge, GCH,

EARLHAM GROVE, LONDON, E7

£975.00 PER MONTH

This sought after area has benefits to suit family with Earlham primary School within yards of the property.

Has to be seen

Apply directly with Landlords

No Agents please.

We will accept DHSS upon interview and satisfactory references. Deposit and rent in advance will be required.

£975.00 PCM AST

EARLHAM GROVE, LONDON, E7

£975.00 PER MONTH

ADDITIONAL IMAGES

